



# MONKSDOWN PRIMARY SCHOOL REMOTE LEARNING ACTIVITIES

Respect, Resilience, Resourcefulness &  
Responsibility.



Year 1

Date: 01.03.21

Our whole school theme for this week is: Resilience

This week is WORLD BOOK WEEK! Our learning will be based on the book 'The Twits' by Roald Dahl.

## DAILY ENGLISH ACTIVITIES

English: [The Twits - AUDIOBOOK](#)

**Monday: Writing** - [Describe Mr Twit's beard.](#) - Extract

**Reading** - Read a book using [Bug Club](#)

**Phonics** - [Adjacent consonants and short vowels video](#)

**Tuesday: Writing** - [Anti-Twit Good thoughts Poem.](#) - Extract

**Reading** - Write a book review of a book you've read.

**Phonics** - [Adjacent consonants and short vowels video](#)

**Wednesday: Writing** - [Make Mrs Twit's trick Menu](#) - Clip

**Reading** - Read a book using [Bug Club](#)

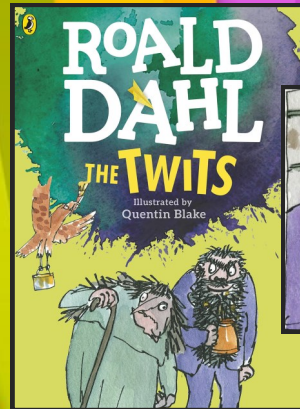
**Phonics** - [Adjacent consonants and short vowels video](#)

**Thursday: Writing** - [Create a recipe for one of the menu items on Mrs Twit's menu.](#) - Clip

**Reading** - Read a book using [Bug Club](#)

**Phonics** - [Adjacent consonants and short vowels video](#)

**Friday: WORLD BOOK DAY** - [See plan](#)



## DAILY MATHS ACTIVITIES

Maths focus: **Number families**

Watch the videos then complete the activities below.

**Monday:** Addition facts [Video activity](#)

**Tuesday:** Number bonds within 10 [Video Activity](#)

**Wednesday:** Systematic number bonds [Video activity](#)

**Thursday:** Number bonds to 10 [Video Activity](#)

**Friday: WORLD BOOK DAY** - [See plan](#)

## WIDER CURRICULUM

### WEEKLY PROJECT

**Monday** - [Can you create a collage of Mr Twit's beard?](#)

**Tuesday** - PSHE - draw a sunshine shape and put your face inside. [Can you ask members of your family to give you compliments and can you write them around?](#)

**Wednesday** - [10.30 LIVE EVENT](#)

**Wednesday & Thursday** - Either based on the story of The Twits, or based on your own favourite book, can you create a book box to celebrate your favourite characters?

[Here are some examples.](#)

**Friday: WORLD BOOK DAY** - [See plan](#)

## LOOKING AFTER YOURSELF

[Weekly Well-Being check](#)

[KSI Weekly PE timetable](#)