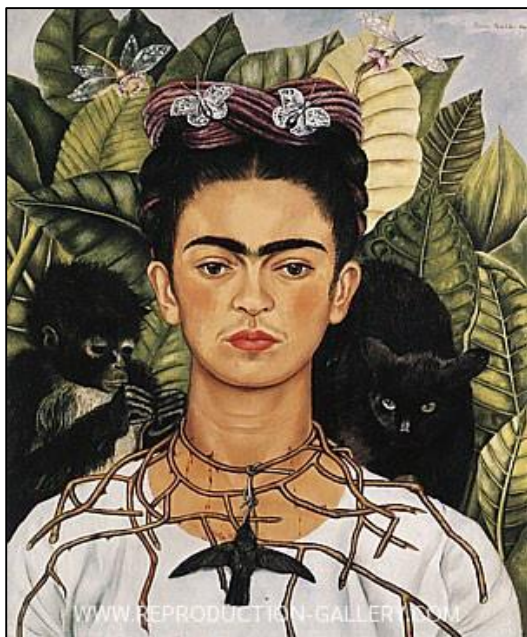


Frida Kahlo



Frida Kahlo was born in Mexico in 1907. When she was a child, Frida loved to draw. When she was 18, she had a terrible bus accident and became bed bound. During her time in bed, Frida would draw to help keep her mind busy and pass the time. She couldn't see very much from her bed, so she had a mirror placed on the ceiling so that she could see herself. She drew and painted a lot of self-portraits using this mirror. Frida included lots of bright colours in her self-portraits, reminding us of the vibrant colours of the hot country where she lived.



Art movement:
Modern Art



Week 3 - Friday 22nd January

Question of the week:

If you were to create a self-portrait, what colours would you use? Are they warm or cold colours? Why? Think of the environment you are in.

Weekend art task:

Draw or cut out a picture of yourself. Can you create a background around yourself to represent the current lockdown?